

SMP-TRL

Reading/Task Light

SMP-TRL

SMP's Reading and Task light is the ultimate bedside light for medical facilities, senior living or anywhere that a smart bed light could be beneficial. The anti-glare diffuser keeps the light soft to protect the eyes from strain. The SMP-TRL is cool to touch after hours of operation. Soft LED light bathes the reading area in comfortable, soothing 3000K illumination. Additionally, a night light incorporated into the handle provides added safety and security, making this light the ideal bedside reading light for medical facilities. Mounting options include table clamp, rail-mount, wall-mount, and rolling floor stand.



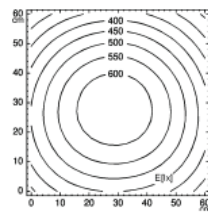
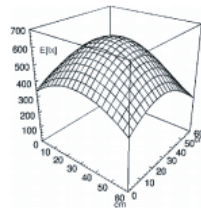
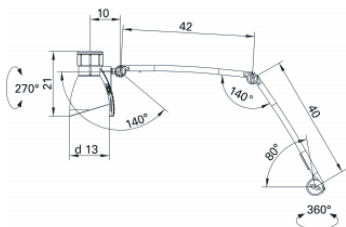
TECHNICAL DATA:

FITTED WITH:	1 X LED Module
LUMINOUS POWER:	735 Lux / 0.5 m (20 in)
COLOR RENDERING INDEX (CRI):	>=85
COLOR TEMPERATURE:	approx. 3000K
WORK EQUIPMENT:	direct plug in 120V
MAINS LEAD:	approx. 3.0m (10ft) USA plug
LUMINAIRE BODY:	polycarbonate (PC)
WEIGHT (NET):	approx. 1.4 kg (3lbs)
POWER OF CONSUMPTION:	approx. 9 W
BALANCE OF	spring
ARTICULATION JOINTS:	
CLASS OF PROTECTION:	II
NORMS:	EN 60598-1, EN 60598-2-25
SAFETY:	ETL/cETL
LIFE FASTENING:	25,000 hours

FEATURES:

- 35" reach premium articulating arm provides drift-free stability during use
- Anti-glare diffuser helps minimize eye strain
- Soft 3000K LED light offers >85 color rendering
- Unique illuminated handle acts as night light, providing added security and safety for patients
- Compact 5.1" diameter light head with 270° rotation around head joint
- 120V direct plug and 10-foot cable included
- 25,000 hours maintenance-free LED operation

TECHNICAL INFORMATION:



ORDERING GUIDE:

S M P - T R L - X X

MOUNTING OPTION

- (TC=Table Clamp)
 (FS=Floorstand)
 (WM=Wall Mount)
 (RM=Rail Mount)

