

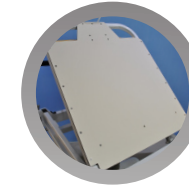
SMP-2500



Central brake



Hydraulic CPR release



X-ray translucent back-rest with cassette holder



Oxygen tank holder



Monitor shelf / Defib. table
*optional



Restraining straps

STRETCHER POSITION



FEATURES AND BENEFITS

- Steel frame construction
- Adjustable back-rest operated via hydraulic gas springs
- Adjustable leg-rest operated via hand crank
- Height adjustment operated via hydraulic pump
- Trendelenburg and reverse Trendelenburg operated via hydraulic pump
- Central brake
- Back-rest made from x-ray translucent surface with x-ray cassette holder
- Foot controls located on both sides of the stretcher
- CPR function
- Stainless steel collapsible handrails
- Detachable IV pole
- Crash bumpers
- Transfer stretcher connectivity
- Retractable 5th wheel
- Restraining straps
- 10 cm high density foam wave mattress
- Monitor shelf / Defib. table (optional)

TECHNICAL DETAILS

- Size:**
(L) 83.5 x (W) 33.5 x (H) 23.6-37.4 (unit of measure: in.)
(L) 2120 x (W) 850 x (H) 600-950 (unit of measure: mm)
- Castor size:** 8 in. (200 mm)
- Safe working load:** 300 kg. (661 lbs.)
- Back angle:** 0-75° (±5°)
- Leg angle:** 0-45° (±5°)
- Trendelenburg & Reverse Trendelenburg angle:** 0-15°

ACCESSORIES



IV pole with four hooks



10 cm high density foam mattress