

SMP-625



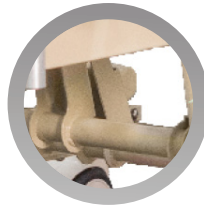
Detachable ABS head and foot board



4 pcs ABS big guard rail



CPR quick release back board



3 years warranty for German Dewert motor



Bed frame cold-rolled steel tube



Patient hand controller



Universal silent wheels with central brake system

BED POSITION



FEATURES AND BENEFITS

Durable frame: made of cold-rolled steel plate, treated by electro-coating and powder-coating

Detachable ABS headboard/footboard

10-part steel bedboards

Detachable ABS handrails with embedded operator

Quiet and robust electric actuators provide reliable operation

Embedded control of all electrically operated functions and movements

Central- controlled braking system

Four silent castors

LINAK motors with battery

Manual CPR

TECHNICAL DETAILS

Size:

(L) 84.6 x (W) 38.2 x (H) 17.7-28.3 (unit of measure: in.)

(L) 2150 x (W) 970 x (H) 450-720 (unit of measure: mm)

Backrest max upward angle: 75°

Footrest max upward angle: 45°

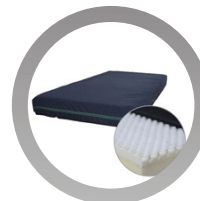
Height Adjustment: 480-760 mm (±5°)

Trendelenburg: 12°

Anti-trendelenburg: 12°

Maximum load capacity: 250 kg. (551 lbs.)

ACCESSORIES



High density sponge mattress



Stainless steel IV pole