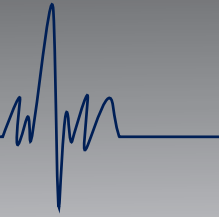




Solutions Start Here...



**Solutions Start Here**

[www.smpcanada.com](http://www.smpcanada.com)

**SMP Canada**

10 Sims Crescent, Richmond Hill  
Ontario, L4B-1K9 Canada  
Tel: (905) 764-7767 Fax: 1-866-627-9798  
[support@smpcanada.com](mailto:support@smpcanada.com)

## Infinite Series

## INSTALLATION INSTRUCTION



# INSTALLATION INSTRUCTION

## VERTICAL FLATWALL INFINITE SERIES

The following instructions are provided for the information of experienced professional installers. This is not a complete installation instruction for the do-it-yourself or unskilled laborer. It is at all times the responsibility of the installer to ensure that the work is carried in a safe and secure manner in accordance with all national, local by-laws, rules and regulations.

### Step 1 - Pre-Installation Set-up:

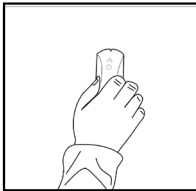
A 16ga or 18ga galvanized steel backer to be installed on wall studs in all locations where flatwalls are to be mounted via the flatwall support bracket.

### Step 2 - Support bracket location

Take the AFF (Above Finish Floor) line and measure 4" from above the line. Mark a horizontal line across the expanse of where the flatwall will be located.

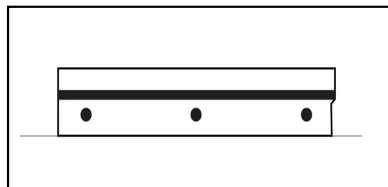
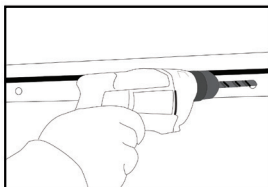
### Step 3 -Determine stud location

To locate studs behind the drywall, use a stud locator and mark the locations vertically as shown in the diagram below. Only mark the studs that will intersect the flatwall.



### Step 4 - Mount the support bracket

Please note that SMP does not provide hardware for mounting the support bracket to the stud locations. Use only approved hardware as per the local building codes in your area. As per the diagram shown below, align the bracket horizontally to the stud locations. Remember to align the bottom of the mounting support bracket to the top of the line.



### Step 5 - Taking off the lens cover - *Optional when light provision is built-in*

Prior to installing lamps please remove the lens cover by placing a wooden block at the edge where the lens meets the extrusion (Figure A) below. Tap on the block to loosen the lens cover (Figure B). Once the lens is loose then pull out from the open side and pop out using both hands (Figure C). Repeat steps if the unit has other light provisions.

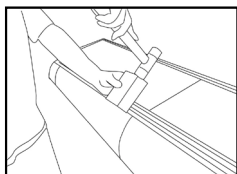


Figure A

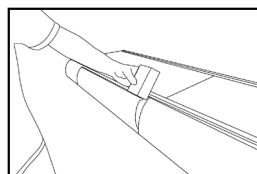


Figure B

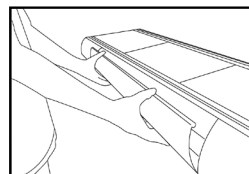


Figure C

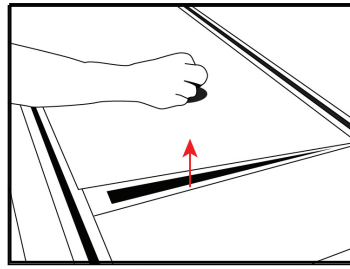
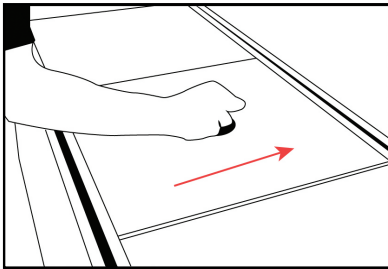


# INSTALLATION INSTRUCTION

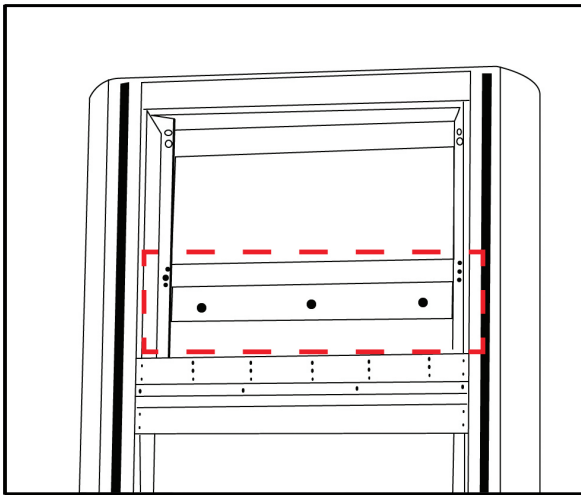
## VERTICAL FLATWALL INFINITE SERIES

### Step 6 - Remove Aluminum Facia from the Flatwall

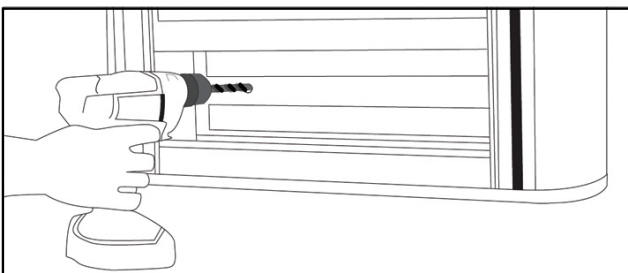
Using the supplied rubber suction cup, place it on the facia and slide it to the right, then pop out the laminate. Follow these steps for all the additional facia laminate panels.



### Step 7 - Hang the flatwall unit onto the support bracket



### Step 8 - Secure flatwall unit from the bottom by screwing the bottom bracket to the wall

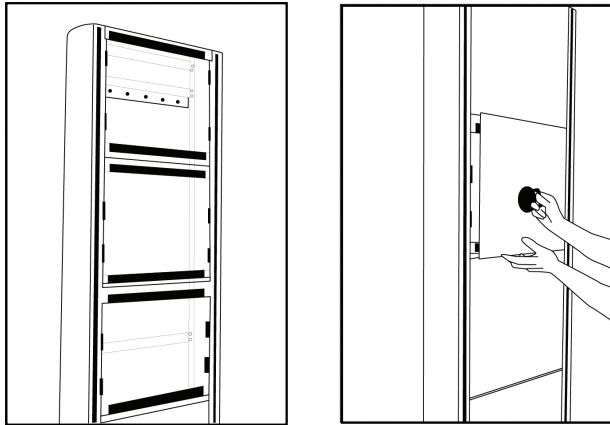




# INSTALLATION INSTRUCTION

## VERTICAL FLATWALL INFINITE SERIES

### Step 9 - Re-Install the facia laminates



### Step 10 - Installing the lamps - *Optional when light provision is built-in*

Insert appropriate light bulb which corresponds with the CAUTION light label. Once light bulbs are installed, place the lens cover back onto the unit. (see step 5)

NOTE: Lamp bulbs are not supplied by SMP.

### Finished Product

