

3-MODE CONTINUOUS



The SMP 3-Mode Continuous Vacuum Regulator is a perfect combination of clearly marked indicators and precise calibration, providing the user with a high quality product for maximum performance and minimum maintenance. In addition, this vacuum regulator provides a broad selection of fittings ensuring compatibility with existing vacuum outlets in any medical facility.

FEATURES AND BENEFITS

Gauge accuracy: $\pm 1.6\%$

Color coded flow ranges

Glow in the dark gauge for easy reading under low light conditions

Gauge available in ISO and US configurations

Accurate, precise suction control

Ergonomic design

Can be sterilized internally with cold disinfectant

Durable high quality ABS protective body for high impact resistance

Comes pre-equipped with an overflow safety trap made from high performance precision thermoplastic

Available gauges:

(0 – 160 mmHg) / (0 – 200 mmHg) / (0 – 300 mmHg) / (0 – 400 mmHg) / (0 – 760 mmHg)

Shell Color: White or Yellow

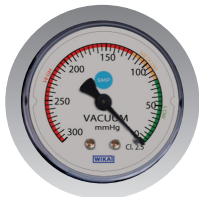
Industry leading 7 year warranty



Glow in the dark gauge



Optional high impact safety trap

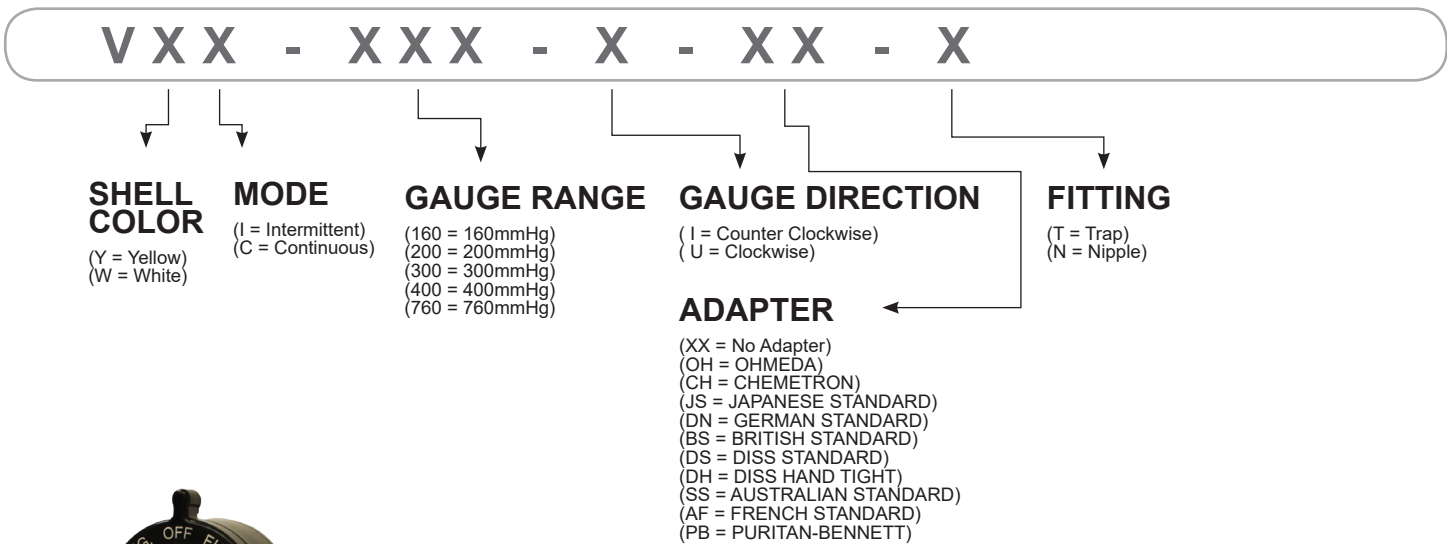


Color coded flow range



OFF	✓	✓	✓	✓
REGULATE	✓	✓	✓	✓
FULL	✓	✓	✓	✓
RANGE	0 - Full Line Vacuum	0 - Full Line Vacuum	0 - Full Line Vacuum	0 - Full Line Vacuum
GAUGE DISPLAY RANGE	0 - 200 mmHg	0 - 300 mmHg	0 - 400 mmHg	0 - 760 mmHg
COLOR CODED FOR PRESSURE LEVEL	✓	✓	✓	✓
GAUGE ACCURACY	±1.6%	±1.6%	±1.6%	±1.6%
GAUGE DIRECTION	Clockwise / Counter Clockwise	Clockwise / Counter Clockwise	Counter Clockwise	Clockwise / Counter Clockwise
FLOW RATE	0 - 60L / min without fitting at full pressure	0 - 60L / min without fitting at full pressure	0 - 60L / min without fitting at full pressure	0 - 60L / min without fitting at full pressure
MEDICAL SUCTION EQUIPMENT STANDARD	ISO 10079-3	ISO 10079-3	ISO 10079-3	ISO 10079-3
WARRANTY LENGTH	7 Years	7 Years	7 Years	7 Years

ORDERING GUIDE



Example:
YYC - 300 - U - DS - T

Color: Yellow shell color
Mode: CONTINUOUS
Gauge Range: 0 - 300 mmHg
Gauge Direction: Clockwise
Adapter: DISS adapter
Fitting: Trap

* 0-200 mmHg available in clockwise gauge only
* 0-400 mmHg available in counter clockwise gauge only
* Intermittent vacuum regulatory available in white shell only

MODE SETTINGS

- REG:** Allows degree of suction to be adjusted by use of the regulating knob
- OFF:** Suction is no longer on or being supplied to the patient
- FULL:** Maximum suction is administered to the patient

