

# NEBULA SERIES

## NEBULA SERIES

The SMP Nebula Series overbed light provides an aesthetic design for both patient and staff. The luminaire features both direct and indirect lighting to meet a variety of healthcare requirements. It is ideal for safely and effectively illuminating hallways and hospital rooms while offering an aesthetic design that supersedes the boxy lights of the past and delivering superior performance.



### FEATURES:

- Asymmetric distribution of upper lighting for best projection
- Diffused lower lighting for visual comfort
- Individual control of both upper and lower lighting through four-position pull-chain switch
- Nightlight encased in main body and controlled through an on/off pull-chain switch
- Aluminum extruded front profile
- Powder coated available in a variety of colours
- Comes pre-equipped with mounting bracket
- Ease of installation.



### TECHNICAL DATA:

UPPER OPTICAL GROUP	Upper semi-transparent methacrylate diffuser, snap-applied without using any tool. Protection degree IP40
LOWER OPTICAL GROUP	Lower opal satin polycarbonate PST diffuser, with smooth external surface, snap-applied without using any tool. Protection degree IP40.
WIRING	220-240V 50/60Hz with rigid cable (section 0.50mm <sup>2</sup> ) and PVC-HT sheathing resistant at 90°C according at CEI 20-20. Terminal board with maximum wire section allowed 2 2.5mm <sup>2</sup> . Insulation class I.
LIGHT SOURCES	High efficiency LED modules IRC>80 colour temperature 400K (LED diodes selected 3 MacAdam eclipses to ensure a perfect uniform chromaticity), duration > 50,000 hours L80/F10 at ambient temperature 25°C.
REGULATIONS	<ul style="list-style-type: none"><li>• EN 61547</li><li>• EN 55015</li><li>• EN 61000-3-2</li><li>• EN 61000-3-3</li><li>• EN 60529</li><li>• IEC/TR 6247 1-2</li><li>• EN 60061-1</li><li>• EN 62031</li><li>• EN 62493</li><li>• EN 60598-1</li><li>• EN 60598-2-13</li><li>• EN 62471 (risk class 0)</li><li>• EN 62560</li><li>• EN 60968</li></ul>



## ORDERING GUIDE

### LED TYPE

**N E D - L E D - X L - X X - X X - X**

#### TYPE OF LIGHT

(D=Direct Light)  
(I=Indirect Light)  
(B=Direct & Indirect Light)

#### LENGTH IN FT.

(2=2 feet)  
(3=3 feet)  
(4=4 feet)

#### NIGHT LIGHT

(Y=Yes)  
(N=No)  
(M=Micro-switch)

#### SWITCH TYPE

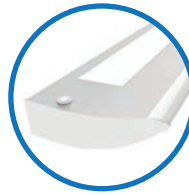
(PC=Pull Chord)  
(SW=Switch On Wall)  
(SL=Switch-less)

#### DECORA FILTER

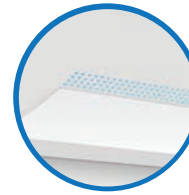
(W=White)  
(B=Blue)

### Example: NEB-LED-BL-3Y-PC-W

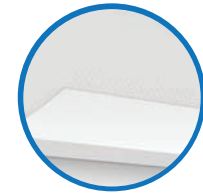
- Direct and indirect light
- Length: 3 ft
- Night light
- Pull chord
- White decora filter



MICRO-SWITCH



DECORA FILTER  
BLUE



DECORA FILTER  
WHITE

### FLUORESCENT TYPE

**N E B - F L T - X X X - X X X - X**

#### LENGTH IN FT.

(2=2 feet)  
(3=3 feet)  
(4=4 feet)

#### TOP LIGHT

(1=1 bulb)  
(2=2 bulbs)  
(0=No top light)

#### BOTTOM LIGHT

(1=1 bulb)  
(2=2 bulbs)  
(0=No bottom light)

#### NIGHT LIGHT

(Y=Yes)  
(N=No)  
(M=Micro-switch)

#### SWITCH TYPE

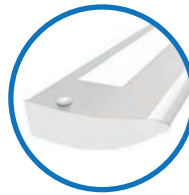
(PC=Pull Chord)  
(SW=Switch On Wall)  
(SL=Switch-less)

#### DECORA FILTER

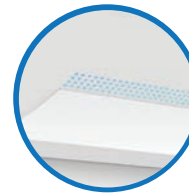
(W=White)  
(B=Blue)

### Example: NEB-FLT-421-YSW-B

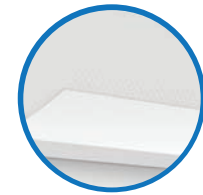
- Length: 4ft
- Top light with 2 bulbs
- Bottom light with 1 bulb
- Night light
- Control switch on wall
- Blue decora filter



MICRO-SWITCH



DECORA FILTER  
BLUE



DECORA FILTER  
WHITE

