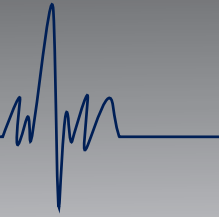




Solutions Start Here...



Fairfield Mounting Rail

Solutions Start Here

www.smpcanada.com

SMP Canada

10 Sims Crescent, Richmond Hill
Ontario, L4B-1K9 Canada
Tel: (905) 764-7767 Fax: 1-866-627-9798
support@smpcanada.com

INSTALLATION INSTRUCTION



INSTALLATION INSTRUCTION

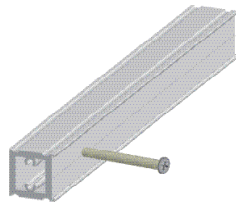
RAIL MOUNTING SYSTEM FAIRFIELD MOUNTING RAIL

Overview

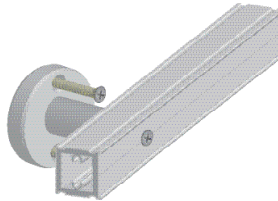
The figures below show the different methods of mounting the rail:
Stud And Drywall Mounting With and Without Stand-off

All the methods use the same installation procedure described in these instructions.

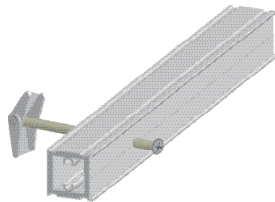
STUD MOUNT



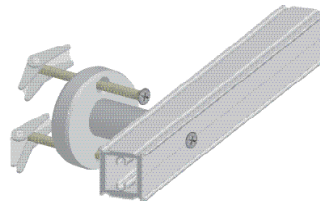
STUD MOUNT WITH STAND-OFF



DRYWALL MOUNT



DRYWALL MOUNT WITH STAND-OFF



Before Installation

Refer to the relevant elevation drawing or other specification for quantity and location of the SMP Fair Field Rail. These rails are designed to mount directly to the wall and to be mounted to stand-offs which are mounted to the wall. Holes in the rail are to be drilled by other, using the center line on the rail as reference.

Tools Required – #3 Phillips screwdriver.

Contents of the package

Either direct mount rail kit or stand-of rail kit, as follows:

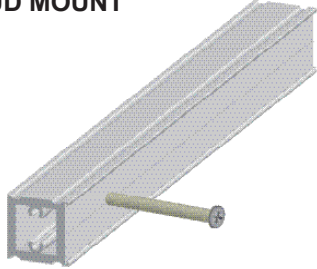
- A direct mount kit is comprised of: Rail, a pkg. of sheet metal screws for the rail, a package of 1/4-20 screws and wing nuts.
- A stand-off mount kit is comprised of: Rail, a pkg. of stand-offs, flat heavy duty sheet metal screws and cap heavy duty machine screws or a pkg. of standoffs, Flat heavy duty machine screws, wing nuts and 1/4-20 screws.



INSTALLATION INSTRUCTION

RAIL MOUNTING SYSTEM FAIRFIELD MOUNTING RAIL

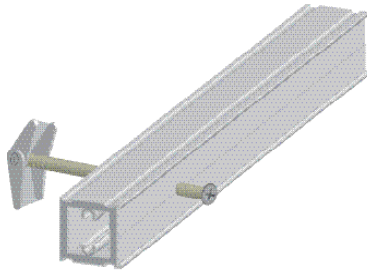
STUD MOUNT



Mounting the rail to wall studs

1. P osition and level the rail on the wall at the correct height and location provided by the architect.
2. P lace one screw through each hole in the rail.
3. D rill the screws through the drywall and into the wall studs securing the rail.

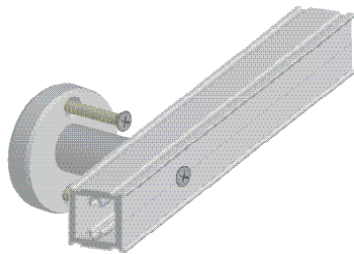
DRYWALL MOUNT



Mounting the rail to drywall

1. P osition and level the rail on the wall at the correct height and location provided by the architect.
2. M ark each of the holes in the rail onto the wall.
3. R emove the rail and drill a 5/8" hole at each of the marks on the wall.
4. R eplace the rail and fasten with 1/4-20 machine screws and wing nuts securing the Fair Field rail.

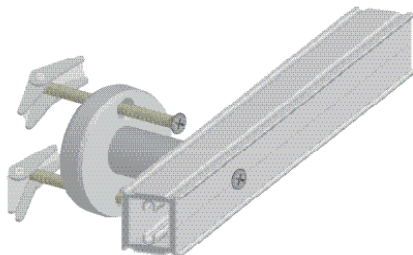
STUD MOUNT WITH STAND-OFF



Mounting the rail with Stand-off wall studs

1. P lace one screw through each hole in the rail.
2. T hread one stand-off onto each screw. Align the two holes in the stand-off perpendicular to the rail as shown in illustration and tighten the screws.
3. P osition and level the rail on the wall at the correct height and location provided by the architect.
4. P lace the sheet metal screws through the two holes in the stand-off, and then drill through the drywall and into the wall studs securing the rail.

DRYWALL MOUNT WITH STAND-OFF



Mounting the rail with Stand-off to drywall

1. P lace one screw through each hole in the rail.
2. T hread one stand-off onto each screw. Align the two holes in the stand-off perpendicular to the rail as shown in figure 3 and tighten the screws.
3. P osition and level the rail on the wall at the correct height and location provided by the architect.
4. M ark each of the holes in the rail onto the wall.
5. R emove the rail and drill a 5/8" hole at each of the marks on the wall.
6. R eplace the rail and fasten each stand-off with two 1/4-20 machine screws and wing nuts securing the Fair Field rail.